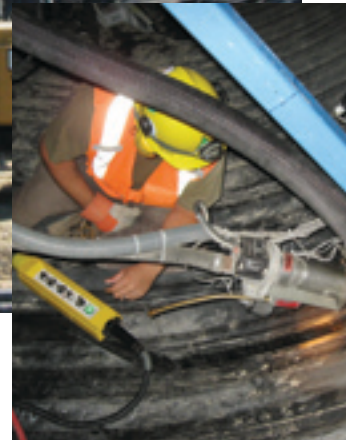


Wawaitin, Ontario

Weholite helps provide clean energy



Ontario Power Generation was given the mandate from the Government of Ontario to “expand, develop and/or improve its hydroelectric generation capacity”. The current redevelopment of three existing small run-of-the-river hydroelectric generating stations located on the Upper Matt-agami River is just one of many ways for OPG to achieve this directive. The Wawaitin generating stations (Wawaitin GS) is located within the City of Timmins municipal boundaries, approximately 25 kilometres southwest of the urban centre. The existing Wawaitin GS is a 10.4 megawatt facility that will increase to 15 megawatts after completion of the work.

The on-going redevelopment at Wawaitin GS includes in the replacement of the powerhouse, penstocks as well as refurbishments to the dam and intake canal. The upper portions of the penstocks were replaced in 2009 with approx. 3,100' of 132"ID Weholite pipe. Weholite was selected for its lower material and joining costs, superior hydraulic properties, inherent toughness and long, trouble-free service life. Infra Pipe field technicians arrived at the jobsite to join the Weholite in June and completed the work in November 2009. In addition to field welding of the Weholite pipe, two manways were installed (one for each penstock) to provide access at the transition point between the Weholite and steel penstocks. OPG is anticipating that the new and improved Wawaitin GS will be operational late 2010.

Uponor's crew performs a field weld on one of the Weholite pipelines

Project:
Upper Mattagami and Hound Chute Redevelopment

Owner:
Ontario Power Generation Inc.

Application:
132"ID RSC160 Weholite penstock

General contractor:
Kiewit-Alarie, A Partnership (KAP)